

McKee Road

52.19 m
51'-3"

60'

120'

Maximum Fire Truck Set-up 12.5%

Usable Lot Area
156,396.0 SF
3.59 acres

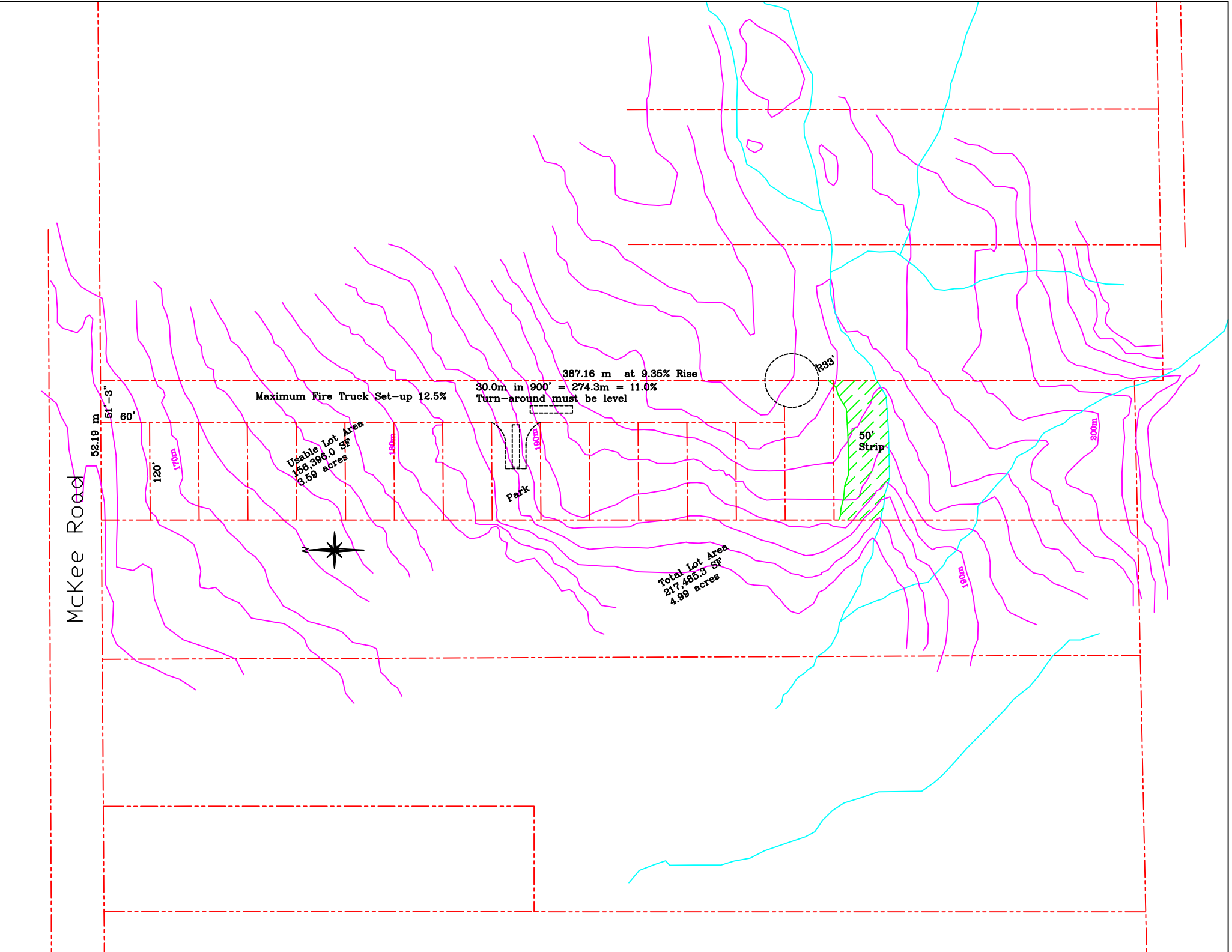
Park

387.16 m at 9.35% Rise
30.0m in 900' = 274.3m = 11.0%
Turn-around must be level

100'

50'
Strip

Total Lot Area
217,485.3 SF
4.99 acres



McKee Road

52.19 m
51'-3"

60'

120'

170m

Maximum Fire Truck Set-up 12.5%

Usable Lot Area
156,396.0 SF
3.59 acres

180m

Park

190m

387.16 m at 9.35% Rise

30.0m in 900' = 274.3m = 11.0%
Turn-around must be level

R33'

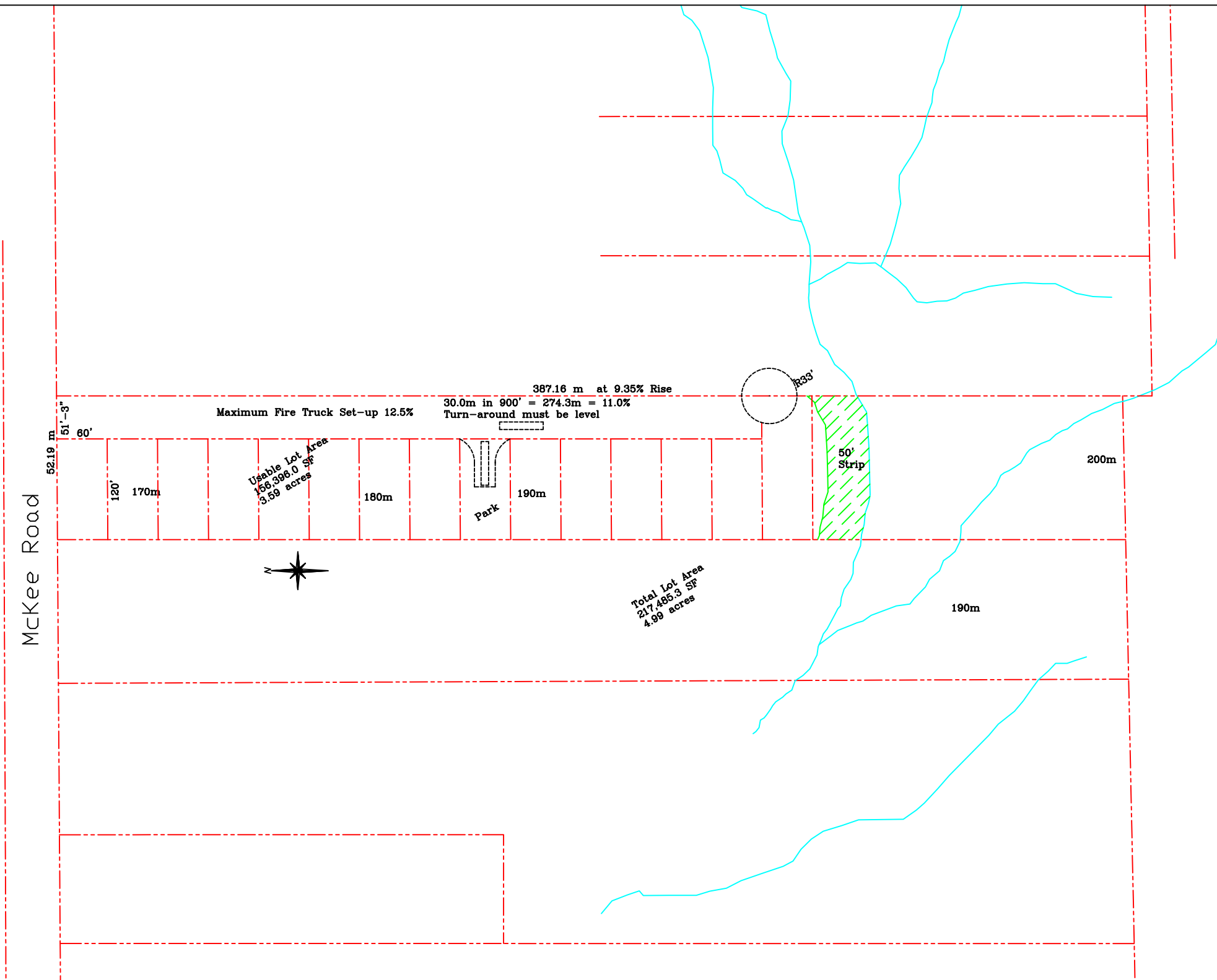
50'
Strip

200m



Total Lot Area
217,485.3 SF
4.99 acres

190m



McKee Road

52.19 m
51'-3"

60'

120'

170m

Maximum Fire Truck Set-up 12.5%

Usable Lot Area
156,396.0 SF
3.59 acres

180m

Park

190m

387.16 m at 9.35% Rise

30.0m in 900' = 274.3m = 11.0%
Turn-around must be level

R4S'

50'
Strip

200m

200m



Total Lot Area
217,485.3 SF
4.99 acres

190m

190m

