

FOR SALE

SUBJECT

AGRICULTURAL LAND

FULLY USABLE FLAT PROPERTY

AREA:
Central Rural

ADDRESS:
24680 Frasersy Hwy.,
Langley, BC

SIZE:
7.770 Acres

PRICE:
\$5,300,000

**HOMELIFE ADVANTAGE REALTY
(CENTRAL VALLEY) LTD.**

Joe Varing - Personal Real Estate Corporation Ltd.
604.565.3478 | info@varinggroup.com

360-3033 Immel Street, Abbotsford, BC V2S 6S2

This document has been prepared by Varing Marketing Group for marketing and general information only. Varing Marketing Group believes the information contained in this information package is correct, but makes no representations or warranties with respect thereto. Interested parties should complete their own independent investigations and enquiries as to the ownership and condition of the property and its suitability for any particular purpose. Not intended to cause breach of existing agency agreement.



HOMELIFE ADVANTAGE REALTY
(CENTRAL VALLEY) LTD.



PROPERTY DESCRIPTION

CIVIC ADDRESS: 24680 Frasery Hwy., Langley, BC
PID: 010-615-814

SIZE: 7.77 Acres

PRICE: \$ 5,300,000

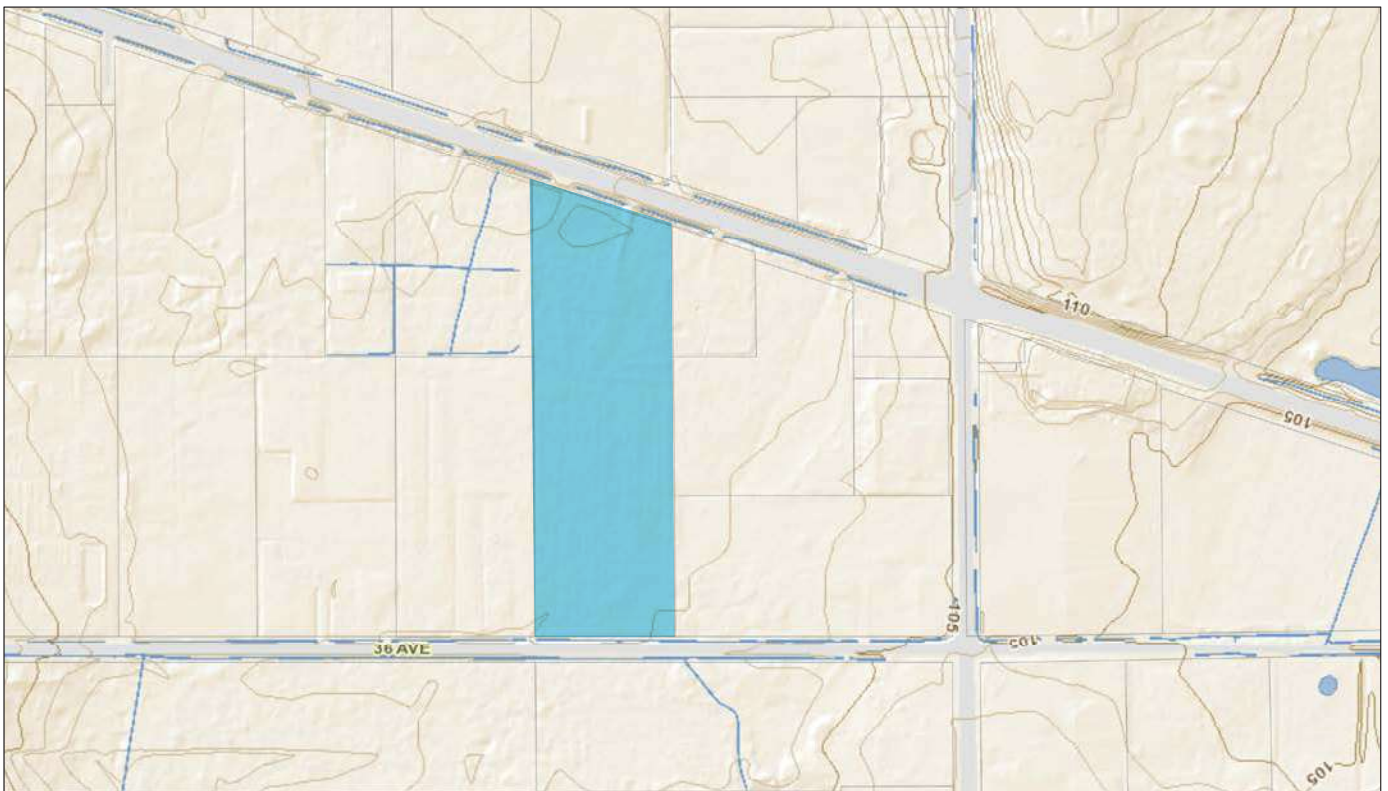
OPPORTUNITY:

- 7.77 acres located in an ideal location
- Property is flat and fully usable with great potential
- Great exposure along Fraser Highway
- Close proximity to Poppy Estates Golf Course & Otter Co-Op
- ALR property with future potential

AERIAL VIEW



TOPOGRAPHY

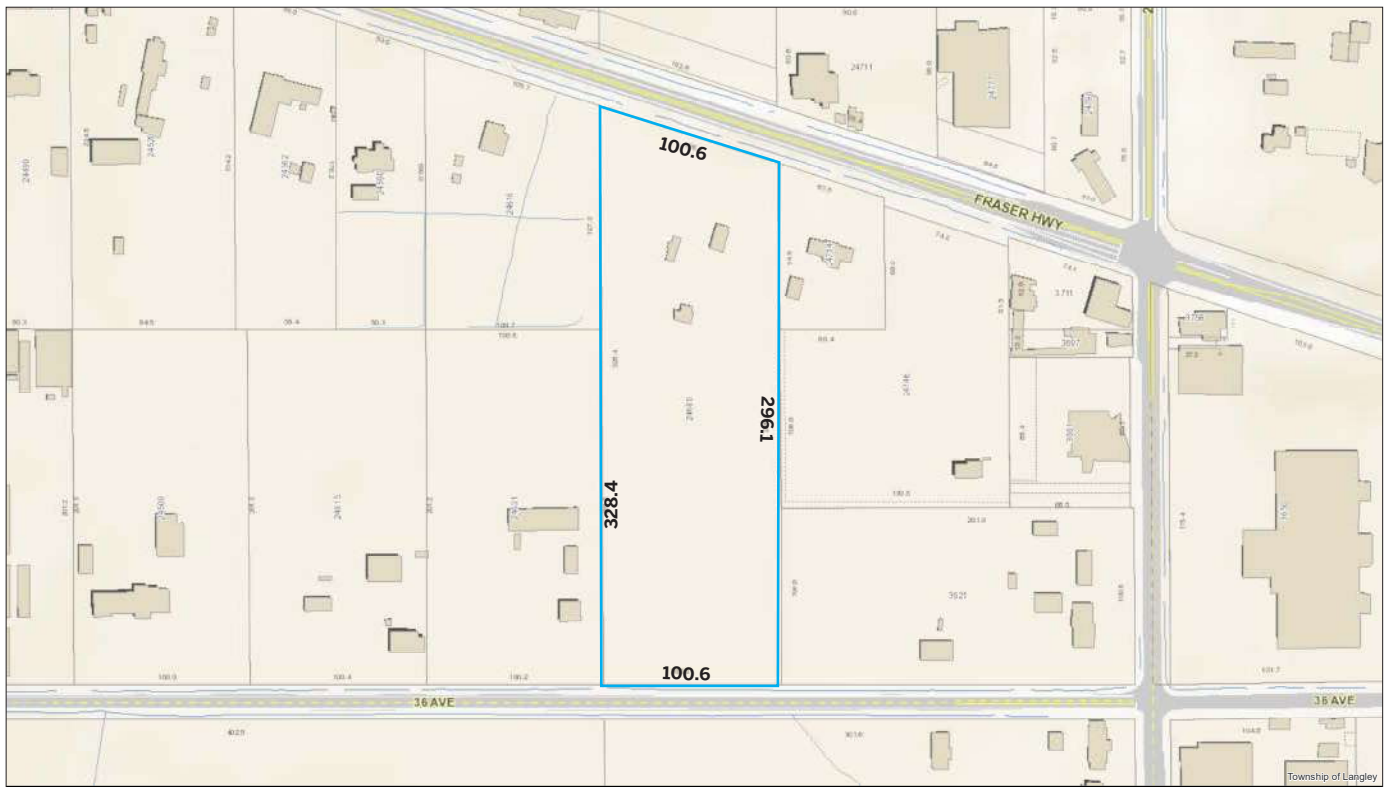


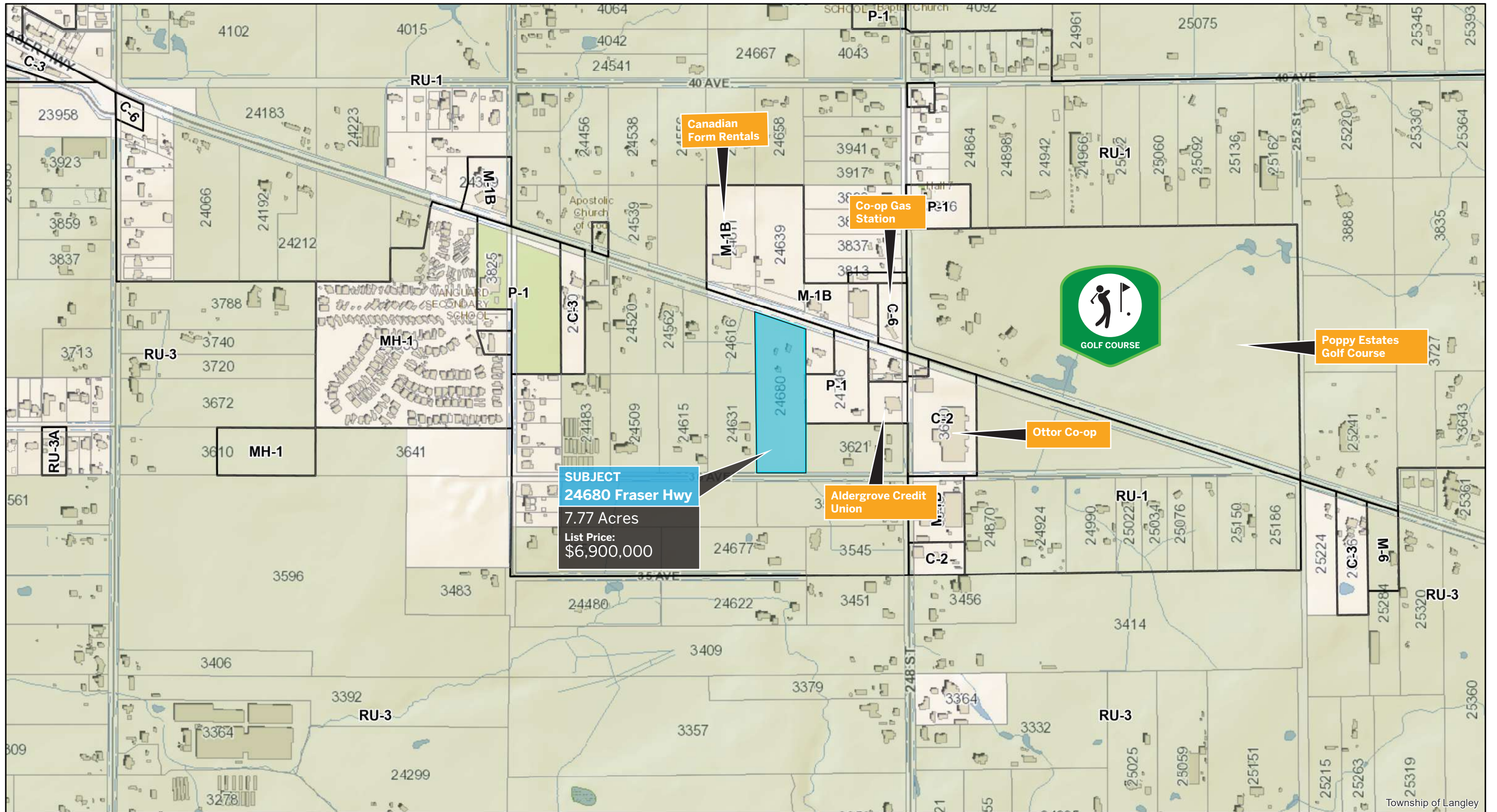
LEGAL VIEW



DIMENSIONS

SUBJECT DIMENSIONS SHOWN IN METERS





SUBJECT
24680 Fraser Hwy
7.77 Acres
List Price:
\$6,900,000

Canadian
Form Rentals

Co-op Gas
Station



Poppy Estates
Golf Course

Ottor Co-op

Aldergrove Credit
Union

