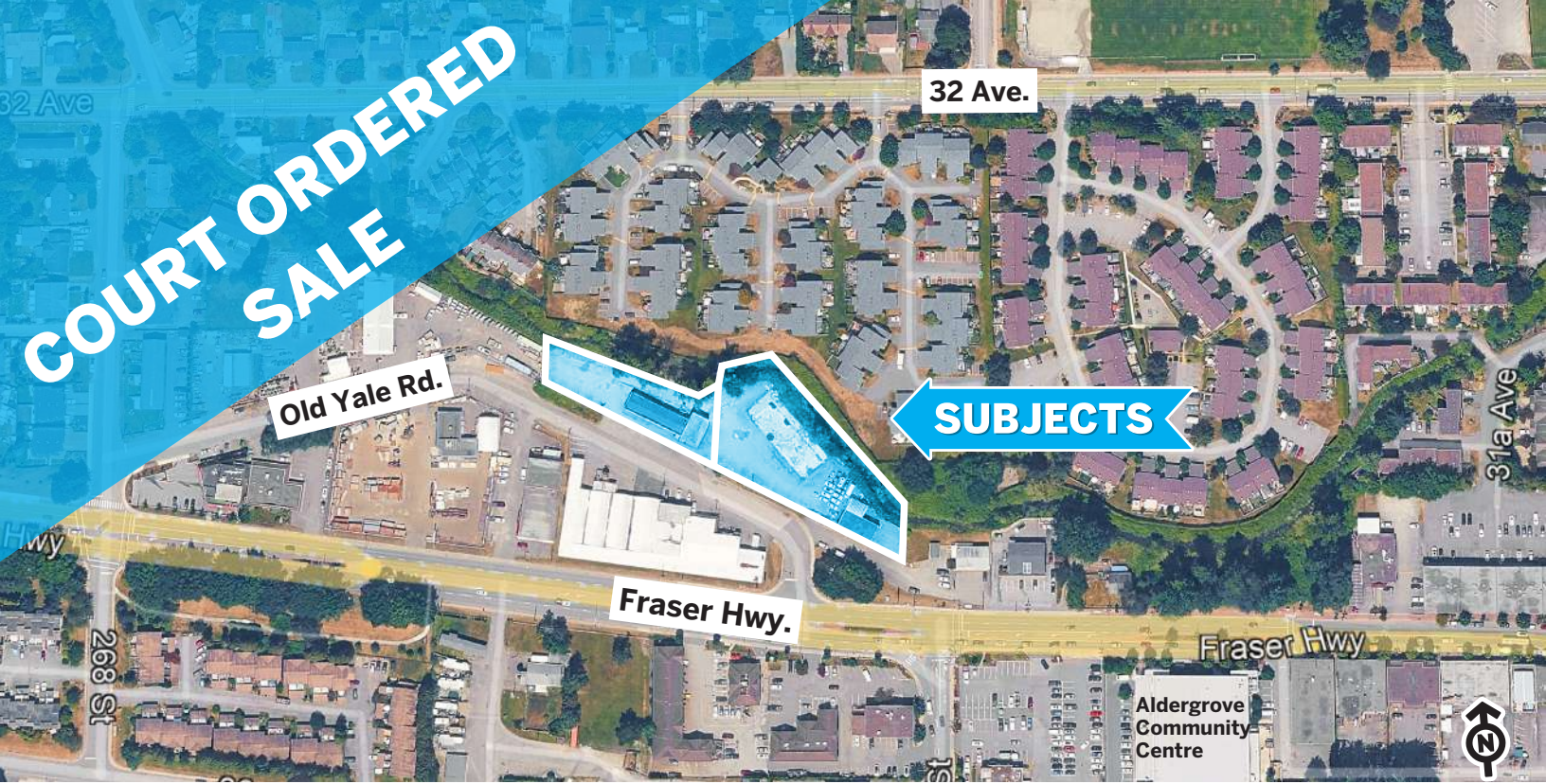


**COURT ORDERED
SALE**



Property Size: 20,624 SF
Current Leasable Area: 5,644 SF



26899 OLD YALE RD: CURRENTLY VACANT

Property Size: 41,975 SF
Current Leasable Area: 2,034 SF



26963 OLD YALE RD: CURRENTLY OCCUPIED BY JIMMY AUTO

LAND: COMMERCIAL OPPORTUNITY

AREA:
Aldergrove

ADDRESS:
26899 + 26963 Old Yale Rd, [Langley](#), BC

SIZE:
1.44 Acres

PRICE:
\$3,950,000



POTENTIAL MOCK UP: CAR WASH & PARKING (SEE PAGE 4 FOR MORE)

VARING
MARKETING GROUP
HOMELIFE ADVANTAGE REALTY LTD.

HOMELIFE ADVANTAGE REALTY LTD.
Joe Varing - Personal Real Estate Corporation Ltd.
604.565.3478 | info@varinggroup.com
360-3033 Immel Street, Abbotsford, BC V2S 6S2

This document has been prepared by Varing Marketing Group for marketing and general information only. Varing Marketing Group believes the information contained in this information package is correct, but makes no representations or warranties with respect thereto. Interested parties should complete their own independent investigations and enquiries as to the ownership and condition of the property and its suitability for any particular purpose. Not intended to cause breach of existing agency agreement.

PROPERTY DESCRIPTION

CIVIC ADDRESS	SIZE	BC ASSESSMENT	PROPERTY TAXES
26899 Old Yale	0.49 Acres	\$2,222,800	\$19,959.56
26963 Old Yale	0.95 Acres	\$3,339,000	\$29,848.32
TOTAL	1.44 Acres	\$5,561,800	\$49,807.88

OPPORTUNITY:

- Court-ordered sale. Sold “as is, where is”. PricewaterhouseCoopers Inc. (the “Receiver”) is the court-appointed receiver and manager of 1385954 B.C. Ltd., Elykwood Forest Products Ltd. and 1337073 B.C. Ltd. (the “Companies”) by order of the Supreme Court of British Columbia and has engaged Homelife Advantage Realty c/o Joe Varing to list & market the subject properties for sale. The Receiver makes no representations or warranties and the sale is subject to court approval; buyers must rely on their own independent due diligence.

[Official Information from the Receiver: Click Here](#)

- The site is designated Service Commercial (C3). See pages 4 & 5 for zoning uses & description.
- Convenient connectivity to Fraser Highway with efficient access to Highway 1, supporting regional transportation and servicing routes.

PROPERTY HIGHLIGHTS:

- Two side-by-side parcels with two existing commercial improvements, offering a highly functional commercial footprint suited to a variety of owner-user and investment opportunities.
- The property features a secure, fenced and paved yard with low site coverage, maximizing usable outdoor storage and laydown area.
- Three drive-in doors enhance operational flexibility for warehousing, service commercial users, contractors, and other operations.
- Access is provided from Old Yale Road, with multiple entry points and internal connectivity between the parcels allowing for efficient site circulation, truck-friendly movement, and practical loading/servicing functionality.
- Generous on-site parking further supports staff, visitors, and day-to-day operational needs.

DUE DILIGENCE DOCUMENTS (AVAILABLE UPON REQUEST):

- Phase 1 Report (Combined)
- Month-to-Month Lease Agreement for 26963 Old Yale Rd (Rent: \$4,300/Month)

PROPERTY VISIT:

- Feel free to drive by the site prior to arranging a formal appointment with our team.

**Note: The sale of the Property is subject to approval by the Supreme Court of British Columbia.*

PROPERTY PHOTOS



POTENTIAL MOCK UPS BASED ON C3 ZONING



603 **SERVICE COMMERCIAL ZONE C-3**

Uses Permitted

603.1 In the C-3 Zone only the following *uses* are permitted and all other *uses* are prohibited:

- 1) *accessory buildings* and uses
- 2) *assembly uses*
- 3) bakeries
- 4) commercial recreation, instruction and entertainment *uses*, excluding *arcades, pool halls* and *casino halls*
- 5) computer and computer accessory stores
- 6) *convenience stores* limited to a maximum *gross floor area* of 450m²
- 7) dry cleaners
- 8) feed, fertilizer and pet supply sales
- 9) *funeral homes* excluding crematoria and accessory crematoria
- 10) furniture stores and appliance stores
- 11) *gas bars*
- 12) *highway commercial uses (the sales, rental or servicing of vehicles, trailers, recreational vehicles, mobile homes, boats, farm and industrial machinery and equipment, and includes lumber and building supply yards, nurseries and garden supply centres, and hotels).*
- 13) *home improvement centres*
- 14) *licensee retail store* subject to the provisions of the Liquor Control and Licensing Act and Regulations on Lot 49, Except part in Plan LMP23118 Section 6 Township 11 New Westminster District Plan 42603
- 15) new automotive parts and accessory stores
- 16) *personal service use*
- 17) public transportation depots
- 18) *refund container return centre* up to a maximum size of 280m² (3,000ft²)
- 19) *residential uses* accessory to *commercial uses* and subject to Section 603.3
- 20) *restaurants*
- 21) sale of seasonal *agricultural* products
- 22) servicing of household appliances and goods
- 23) *service stations*
- 24) taxi dispatch and pickup and delivery offices
- 25) *vehicle servicing* and *vehicle repair shops*
- 26) veterinary clinics
- 27) video sales and rental stores
- 28) wholesale distribution uses
- 29) *licensee retail store* subject to the provisions of the Liquor Control and Licensing Act and Regulations on Lot 1 Section 6 Township 14 NWD Plan LMP48899

Commercial Uses

603.2 All business shall be conducted within a completely enclosed *building* except for parking, loading, display, commercial recreation, eating areas and seasonal *uses*, where accessory to a permitted *use*.

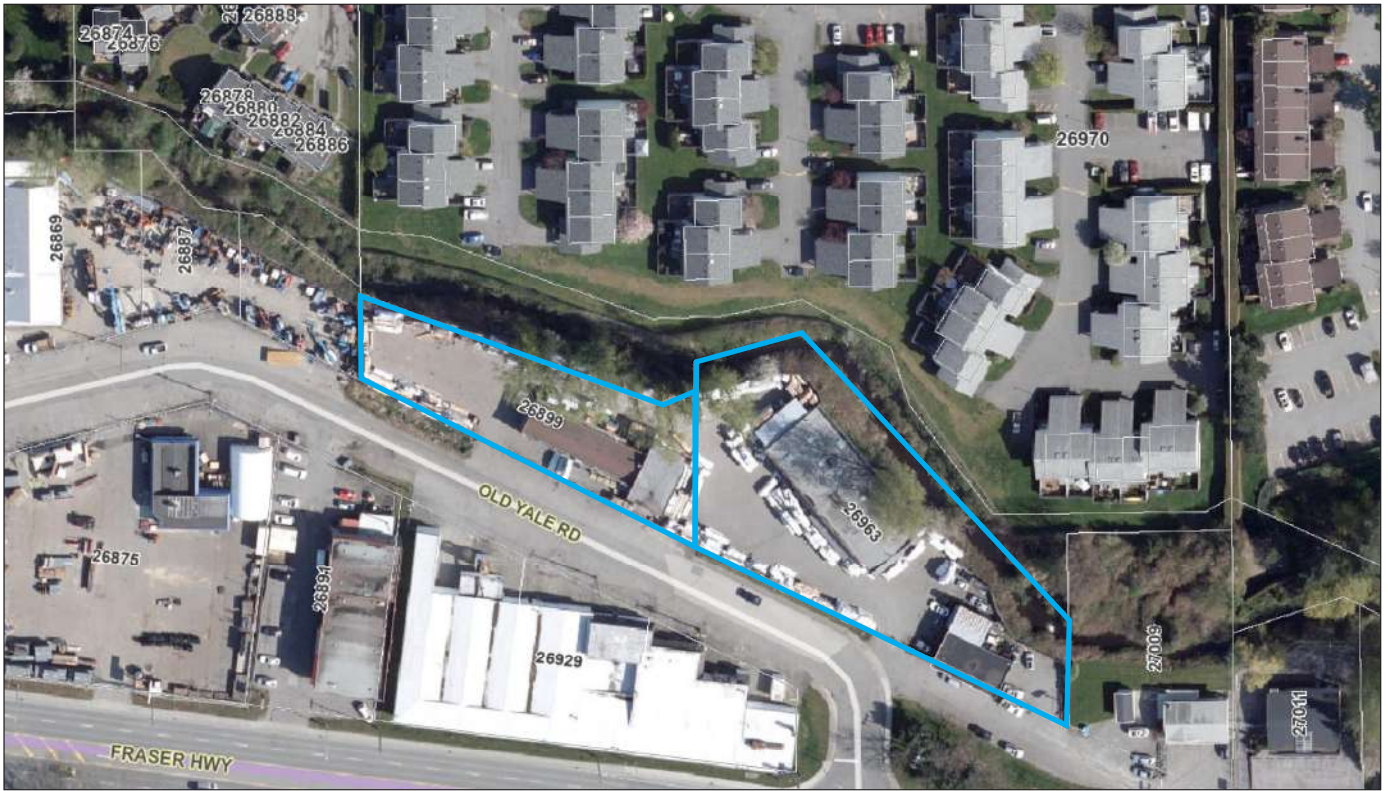
Residential Uses

603.3 *Residential use* is limited to one *dwelling unit* or *mobile home* per *lot* for occupancy by the owner, manager or caretaker and immediate *family*.

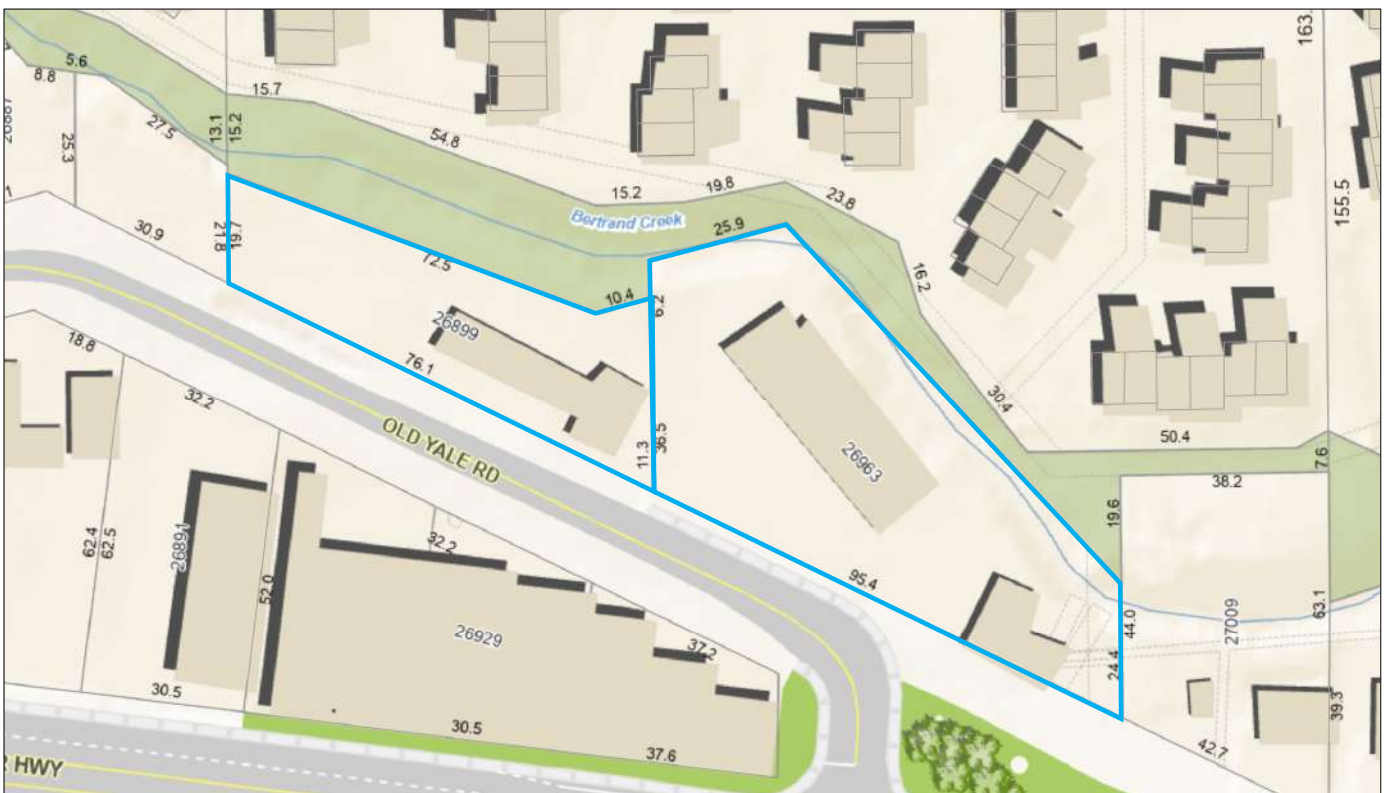
Lot Coverage

603.4 *Buildings* and *structures* shall not cover more than 40% of the *lot area*.

AERIAL VIEW



DIMENSIONS



What's your **property** worth?

If you're considering the sale of a property this year, please call/text for an assessment [236.866.6036](tel:236.866.6036) or email at team@varinggroup.com

